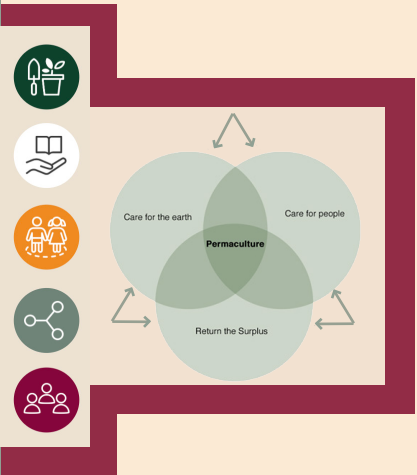


THE GARDEN ROUTE

Riviere Des Prairies (RDP)

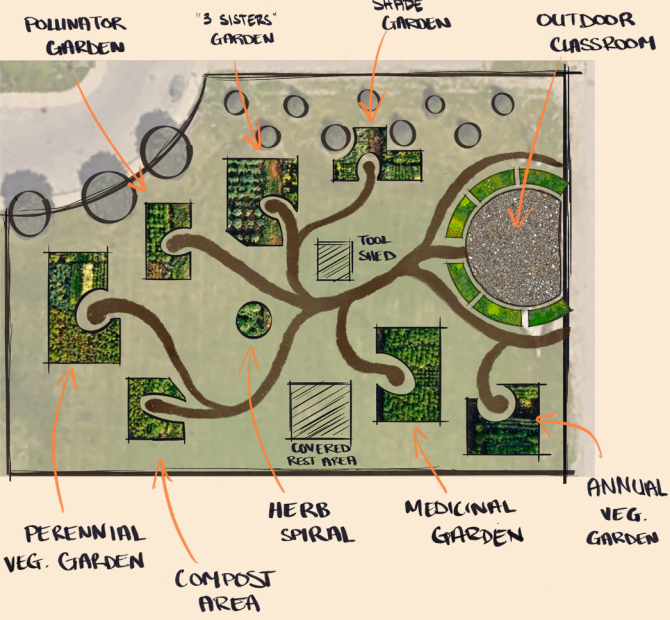
Enhancing Biodiversity & Building Community Resilience through Urban Agriculture



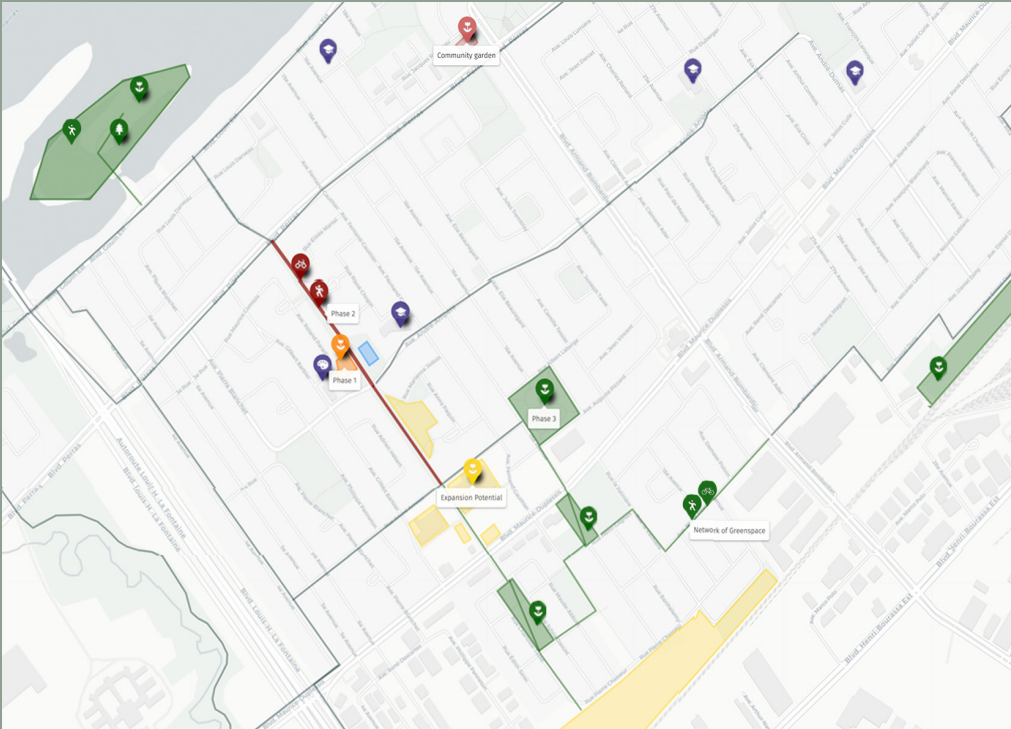
PHASE 1

Permaculture Showcase Garden & Outdoor Classroom

A permaculture showcase garden in a section of the Hans-Selye park, with various gardens and raised beds, demonstrates the best sustainable and regenerative practices for urban agriculture. An outdoor classroom integrated into the garden also allows the opportunity for educational, hands-on experience for nearby elementary school students and summer camps.



CONCEPT MAP



PROJECT MANDATE

In an effort to further the borough of RDP's plan for the conversion of 30 hectares of land into urban agriculture, this project creates dynamic and engaging green spaces which serve as both educational and social hubs that serve to address issues pertaining to the disconnect between people and their foodsource.

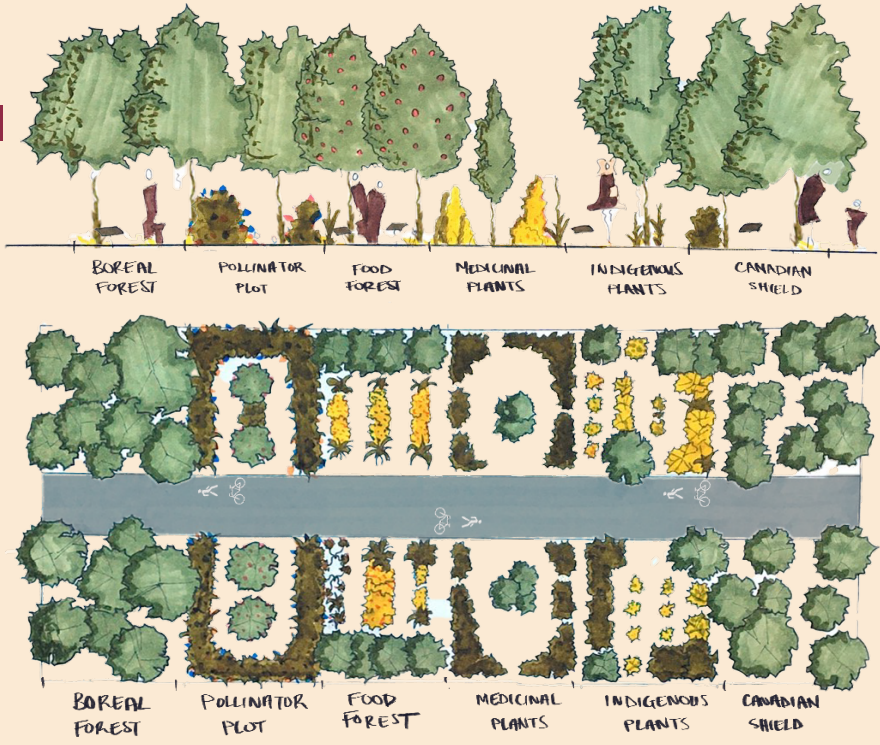
Over three phases, including a permaculture showcase garden, a linear green agricultural corridor, and the enhancement of an existing conservation area, this initiative aims to strengthen community resilience in Rivière des Prairies, create positive ecological spaces for enhanced biodiversity within the city, and share any surplus benefits among those who need them most.

The long-term goal of this urban agriculture project is to provide an easily replicable and adaptable model of positive and educational natural environments in Rivière-des-Prairies. Over time, "The Green Route" could connect elementary schools and green spaces throughout the borough, thereby engaging community members and promoting the benefits of small-scale and sustainable food production.

PHASE 2

Linear Agriculture Corridor

Linking Boulevard Perras and Rue André Arnoeux through a linear educational path, where space is segmented into ecological themes alongside the shoulder of this corridor. As space is limited, this phase intends on clustering and presenting agricultural knowledge to the users of this corridor. This efficient use of space will ensure the users of the corridor and its surrounding community are engaged with the cascading ecological hubs this space offers.



DESIGN GOALS



Install a productive, educational garden to showcase the possibilities of urban agriculture and permaculture practices in Riviere-des-Prairies



Concentrate local knowledge of urban agriculture and biodiversity and provide information and access to other community projects, initiatives and workshops



Create opportunity for integration of a seed-to-harvest school and summer camp garden program where children will learn valuable skills



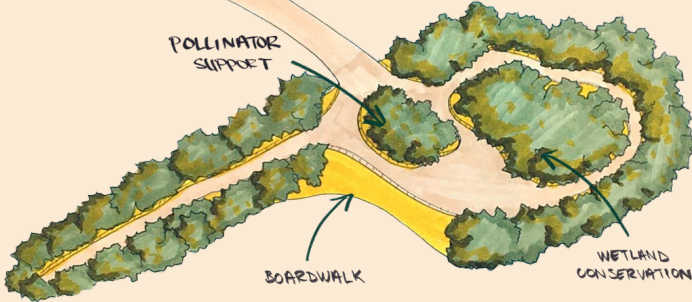
Create a network of greenspace to enhance urban biodiversity and connection in the North-South orientation



Foster an environment which helps to develop social, inter-generational connection and community development

PHASE 3

Conservation Expansion - Ile des Prairies



The proposal includes transforming sections of already existing greenspaces, and shows the possibility of expanding the area of land designated to urban agriculture by 14 hectares. Also included is the transformation of 6.8 hectares of land to biodiversity conservation on Ile des Prairies, through the planting of pollinators and other local species wetland species and introducing a pedestrian boardwalk and benches for public enjoyment, leisure activity and conservation education.

The Garden Route is proposed to connect these intricacies by an active transportation network with a minor addition of 3.5km to the already existing bike network, as seen in green in the concept map above. The potential for expansion of urban agriculture onto land designated for residential development and the rooftops or parking lots of the Canadian Tire and Maxi&Cie presents a further 6.4 hectares.

BLAKE KLOTZ
ELEANOR SIMPSON
DAVID STE-MARIE

VOILA, CITÉ STUDIO
URBS 433
PROFESSOR DONNY SETO

